



CODEN [USA]: IAJ PBB

ISSN: 2349-7750

**INDO AMERICAN JOURNAL OF
PHARMACEUTICAL SCIENCES**<http://doi.org/10.5281/zenodo.2556175>Available online at: <http://www.iajps.com>

Research Article

**LH/FSH PROPORTION AMONG FEMALES ALONG WITH
EMBRYO QUALITY, INTRACYTOPLASMIC SPERM
INOCULATION, CLINICAL PREGNANCY RATE &
IMPLANTATION**¹Dr. Maria Hina, ²Dr. Maryam Ikram, ³Dr. Iqra Idrees¹House Officer DHQ Teaching Hospital Gujranwala**Abstract:**

Objective: The objective of the existing research to detect the outcome of cavity inspiring hormone-luteinizing hormone proportion on oocyte restrictions, the superiority of beginning, the establishment, in addition, medical gestation degree afterwards intracytoplasmic semen inoculation.

Methods: This is the surveying research which remained led at the Mayo Hospital, Lahore, also included figures of key childless women that suffered intracytoplasmic semen inoculation as of February to November 2017. Completely participants

had a period of sterility greater than three yrs, besides age series was 21 – 42 years. Follicle inspiring hormone in addition luteinizing hormone remained projected through enzyme-related immunosorbent examine on 4th day of sequence also proportion remained planned. Sets remained stratified on a foundation of average proportion into sets I <2.27 plus set II >2.27. SPSS remained exercised designed for facts investigation.

Results: Altogether 285 women, 144 (52%) stayed in set 1 also 141 (48%) in set 2. The Gestation remained assimilated through 80 (56%) also 21 (15%) women in set 1 also set 2 correspondingly. The quantity of recovered, metaphase, inseminated oocytes, sliced embryos besides endometrial breadth remained meaningfully greater in set 1 ($p < 0.0002$).

Conclusion: Follicle inspiring hormone-luteinizing hormone proportion was fewer as compared to 2.27 stayed connected by respectable oocyte limitations, highest superiority rudiment also establishment afterwards intracytoplasmic semen inoculation.

Keywords: Childlessness, Intracytoplasmic sperm inoculation, follicle inspiring hormone, luteinizing hormone, FSH/LH proportion.

Corresponding author:**Maria Hina,**

House Officer DHQ Teaching Hospital Gujranwala.

QR code



Please cite this article in press Maria Hina et al., *Lh/Fsh Proportion Among Females Along With Embryo Quality, Intracytoplasmic Sperm Inoculation, Clinical Pregnancy Rate & Implantation.*, Indo Am. J. P. Sci, 2019; 06(02).

INTRODUCTION:

Childlessness stays incapability of the sexually dynamic, non-contracepting pair to accomplish prenatal period in a year [1]. It remains initiate to remain extremely widespread in South Asia, by the projected proportion of 4% plus overhead conditions of main childlessness in our country. Development in medicinal skill plus knowledge has ended means for operative cure modalities of childlessness, existing for persons of suboptimal generative healthiness [2]. Solitary of false generative methods remains intracytoplasmic semen inoculation in this only semen remains presented through the micropipette into the center of the egg. ICSI remains the process that remains designated in functional besides physical deviation in mem generative zone or else irregularity in semen sum, morphology besides motility. In addition, ICSI has been chosen for in situations of letdown by esteem to in-vitro fertilization sequences regardless of reason of sterility. Amongst numerous aspects complicated in women childlessness remain hormonal irregularities, particularly of follicle inspiring hormone, luteinizing hormone, progesterone, estradiol, prolactin besides thyroid hormones. In a total of those hormones, FSH also LH have the essential part in the guideline of subtle endocrine instruments of fruit [3]. FSH plus LH fit humanoid gonadotropins family; they arouse berries, in addition, remain vital aimed at imitation. FSH concealed as of frontal pituitary gland not solitary arouses development of ovarian sacs, but then likewise indorses estradiol manufacture. Basal FSH remains recognized endocrine indication of ovarian reserve, lengthways by inhibin B, E2, an anti-Mullerian hormone, in addition, antral follicle count [4]. FSH inductee's follicular development besides stimulates berries to harvest steroid hormones, LH outpouring reasons ovulation, in addition, controls statement of generative hormones. In height, FSH stages remain related by early ovarian letdown [5]. Consequently, correct stability among FSH plus LH in females remains vital for imitation. Through age, richness in females' reductions. An upsurge in FSH happens beforehand elevation in LH consequently primary allusion of reduced OR can remain owing to the augmented FSH-LH relation. Satisfactory OR else remains the requirement aimed at fruitful IVF or ICSI action; therefore, the dimension of FSH/LH relation remains significant to regulate that patients have the huge consequence opportunity [6]. The present research remained deliberate to detect the result of FSH-LH proportion on oocyte limitations, the excellence of embryo, the establishment, in addition, medical gestation proportion afterwards ICSI.

SUBJECTS AND METHODOLOGY:

This is surveying research remained led at Mayo Hospital, Lahore, in addition, encompassed facts connected to women that experienced ICSI amongst February to November 2017. Afterwards endorsement as of recognized morals assessment boarding, females noted of aged 19 – 41 years, that had main childlessness aimed at two yrs, whose current equally ovaries remained deprived of somewhat morphological irregularities, had standard ovulatory sequence (26 – 36 days), had body mass index 19 – 28 kg/m², plus whose basal FSH stages on day 3 remained <11 mi U/mL. Childless situations by reason in men spouse remained excepted. FSH besides LH stages had been projected through enzyme related immunosorbent assess on day 3 of series in addition proportion remained calculated. Those patients experienced extended down-directive of pituitary gland through the usage of gonadotrophin discharging hormone agonist. The growth of follicular regiment remained encouraged through advanced dosages of (rFSH). Follicular development remained observed through TVS. When foremost sacs remained developed, ovulation remained caused by humanoid severe gonadotropin. Endometrial width remained unhurried on the day by the assistance of TVS. The oocytes remained recovered as of sacs 38 hrz afterwards inoculation through the ultrasound-directed transvaginal ambition of follicular unsolidified. Microinjected developed oocytes remained grownup in ethos middle till blastocysts phase. On usual 2 to 4 blastocysts remained transported hooked on uterine hollow on day 6 afterwards recovery of oocytes. The medical gestation remained to establish through attendance of solitary or else extra growth bags by cardiac action on TVS, 3 weeks afterwards confident gravidity exam through serum beta hCG dimension. Average establishment proportion remained quantity of beginnings moved subsequently in the intrauterine gestational pouch. A sequence features, oocyte plus embryo restrictions, the establishment also CP proportion remained associated in sets stratified on the average phase of FSH/LH proportion 2.27. Set 1 comprised females by FSH/LH proportion <2.27 besides set 2 included these through >2.27 FSH/LH proportion. Statistics remained arrived into MS Excel besides studied exercising SPSS. Incidences in addition proportions for definite variables, in addition, average \pm normal nonconformity remained occupied aimed at incessant variables. Shapiro-Wilk exam recognized non-standard variables in facts, henceforth Mann-Whitney U trial remained practised to measure variance among variables on a foundation of average worth of FSH/LH proportion. Consequences remained measured momentous at

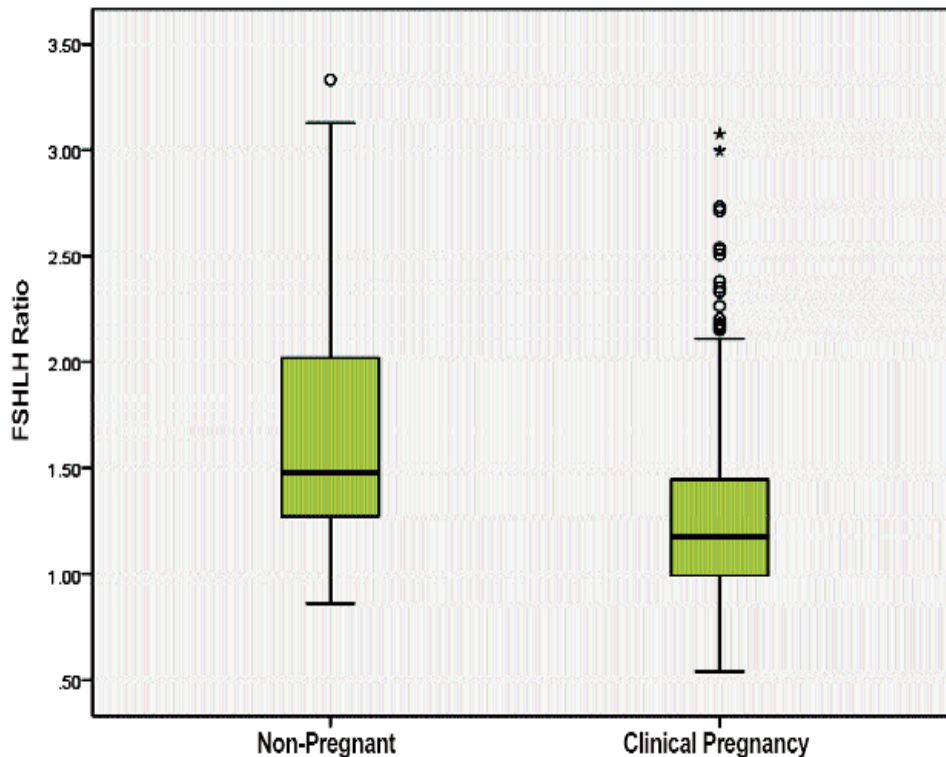
$p < 0.06$.

RESULTS:

In a total of 285 women whose archives remained studied, 144(52%) plus 141(48%) contained set 1 plus 2

correspondingly. General, average FSH phase remained 7.69 ± 2.09 , average LH remained 6.18 ± 2.43 , besides average FSH/LH proportion remained 2.41 ± 1.52 . Oldness, BMI besides a period of childlessness did not display important variance in sets. Sum of recovered, established (metaphase) in addition pollinated oocytes, sliced rudiments also endometrial breadth remained meaningfully greater

in the set I ($p < 0.0002$). The whole sum of gestations in current research set stayed 102/283 by the CP degree of 37%. In set 1, non-pregnant remained 65/144 (46%) in addition 80/144 (56%) remained expecting. In set 2, 118/140 (83%) remained non-pregnant also 23/141 (17%) had conceptions. CP proportion in set 1 remained 80/102 (79%) besides 22/102 (21%) in set 2. The establishment proportion in set 1 remained expressively advanced as compared to set 2 ($p < 0.00-2$). The case conspiracies of FSH-LH proportion through esteem to nonpregnant (185) besides CP ($n=102$) sets displayed the superior sum of CPs in set 2 as shown in the given figure.



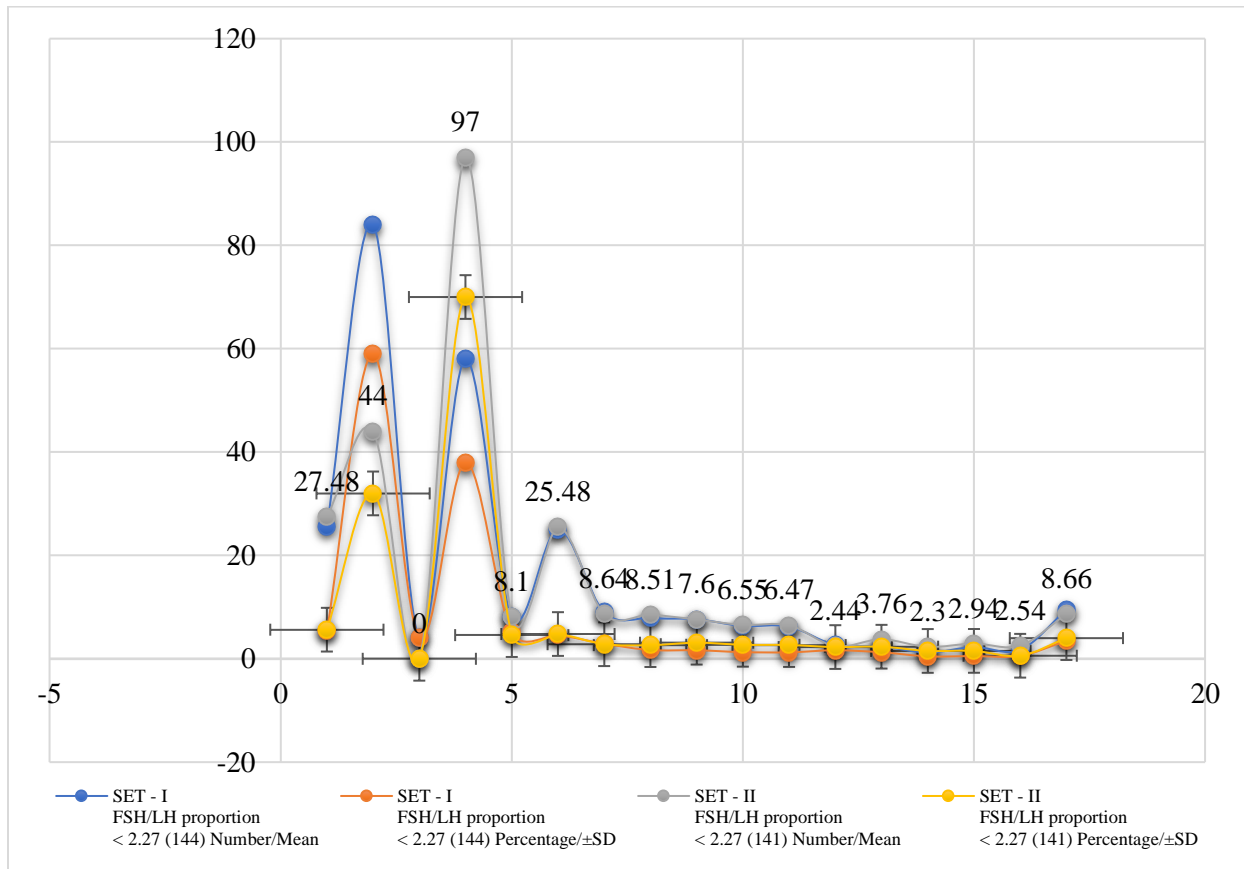
FSH: Follicle Stimulating Hormone

LH: Luteinizing Hormone

Table: Contrast of sequence features

Variables	SET - I FSH/LH proportion < 2.27 (144)		SET - II FSH/LH proportion < 2.27 (141)		P-Value
	Number/ Mean	Percentage/ \pm SD	Number/ Mean	Percentage/ \pm SD	
Age at wedding	25.56	5.37	27.48	5.63	0.09
Polycystic	84	59	44	32	0.0002
Tubal	4	4	0	0	-
Unsolved	58	38	97	70	0.0002

Period of childlessness	8.14	5.15	8.1	4.58	NS
BMI (Kg/m ²)	25.04	4.58	25.48	4.79	NS
Pre-ovulatory cavity count	8.99	2.92	8.64	2.82	0.09
Quantity of oocytes/patient	7.87	1.7	8.51	2.64	0.0002
Metaphase 2	7.65	1.65	7.6	3.11	0.00006
Fertilized oocytes	6.34	1.29	6.55	2.71	0.0002
Sum of cleaved embryos	6.24	1.25	6.47	2.66	0.002
Rating 1	2.66	1.64	2.44	2.27	0.002
Rating 2	2.38	1.26	3.76	2.34	0.005
Rating 3	1.2	0.47	2.3	1.52	NS
Blastocysts designed	2.27	0.53	2.94	1.53	0.0002
Sum of moved embryos	1.71	0.57	2.54	0.59	0.008
Endometrial width	9.51	3.47	8.66	4	0.0002
Establishment amount (%)	49.29		15.24		0.0002



DISCUSSION:

Numerous previous researches are examined possessions of FSH-LH proportion on IVF consequences or else ovarian reply. The current research remained passed out to recognize also authorize position of FSH-LH proportion by way of

the pointer of consequences afterwards ICSI measures in our country. Females through LH besides FSH attentions inside standard restrictions besides these through little FSH/LH relation remain classically distinct as standard in addition tall responders individually. Tall participants have been

recognized through sterility authorities by way of women by tall highest E2 in addition improved oocyte retrieval in addition embryo superiority [7]. Researchers have detected the meaningfully inferior sum of oocytes in set 2 which displayed developed FSH/LH proportion. This remains described that developed heights of FSH/LH proportion superior to 3 remains related through the inferior sum of recovered oocytes [8]. Comparable results remained existing through extra investigators who pragmatic the reduced oocyte recovery in patients through the tall FSH/LH relation (≤ 3) [9]. Sum of oocytes in metaphase 2 specifies the sum of oocytes that influence maturing, in addition, remains consequently the symbol of the confident consequence of ICSI. We detected that number of oocytes in metaphase 2 remained meaningfully inferior in set 2. In the current research on established oocyte produce in pituitary down-regulated females, it remained detected that some of developed oocytes remained contrariwise associated to FSH/LH proportion. The comparable research on patients enduring IVF sequences presented that raised FSH-LH relation remained related through less developed oocytes [10]. On opposing, the research exhibited not any substantial variance in quantity of established oocytes in sets defined by 4 FSH-LH proportion. Consequences might too remain diverse owing to the great alteration among three set sizes, 478 in addition 197 correspondingly, besides alteration in the average rate of dual exploration researches. We endorse that hormone assesses, counting FSH also LH phases, would remain requirement beforehand preliminary ART sequences [11]. FSH-LH relation might remain measured by way of the normal broadcast trial to classes patients who might greatest advantage as of ART cure. If extreme accurateness in psychoanalysis remains defensible, endocrine difficult, particularly of FSH in addition LH, can remain practised for prognostic data along through extra limitations just like AFC plus AMH [12].

CONCLUSION:

Patients through the raised FSH/LH proportion (>2.27) had reduced sum of oocytes, developed oocytes, sliced embryos, endometrial width, establishment amount besides blastocysts shaped; altogether suggesting a deprived reply to ICSI. FSH-LH relation might remain practised to measure reply of cure in ART.

REFERENCES:

1. Rehman R, Hussain Z, Zahir H, Khan R. Impact of peak/mid-luteal estradiol on pregnancy outcome after intracytoplasmic sperm injection. *J Pak Med Assoc.* 2014; 64: 780-4.
2. Seckin B, Turkcapar F, Ozaksit G. Elevated day 3 FSH/LH ratio: a marker to predict IVF outcome in young and older women. *J Assist Reprod Genet* 2012; 29: 231-6.
3. Rehman R, Khan R, Baig M, Hussain M, Fatima SS. Estradiol progesterone ratio on ovulation induction day: a determinant of successful pregnancy outcome after intracytoplasmic sperm injection. *Iran J Reprod Med.* 2014; 12: 633-40.
4. Prasad S, Gupta T, Divya A. Correlation of the Day 3 FSH/LH Ratio and LH Concentration in Predicting IVF Outcome. *J Reprod Infertil.* 2013; 14: 23-8.
5. Mahesh VB. Polycystic ovarian disease, and the steroid gonadotropin- feedback system: a career retrospective. *Am J Physiol Endocrinol Metab* 2012; 302: E4-E18.
6. Lenton EA, Sexton L, Lee S, Cooke ID. Progressive changes in LH and FSH and LH: FSH ratio in women throughout reproductive life. *Maturities.* 1988; 10: 35-43.
7. Lyu SW, Kim A, Kim JW, Han JE, Seok HH, Kawk IP. Impact of high basal FSH/LH ratio in women with normal FSH levels on in vitro fertilization outcomes. *Gynecol Endocrinol.* 2013; 29: 424-9.
8. Shaheen R, Fazil S, Sultan S, Subhan K, Tahir F. Prevalence of Infertility in a Cross Section of Pakistani Population. *Pakistan J Zool.* 2010; 42: 389-93.
9. Rehman R, Hussain Z, Fatima SS. Effect of weight status on pregnancy outcome in intracytoplasmic sperm injection. *Iran J Reprod Med* 2013; 11: 717-24.
10. Palermo R. Differential actions of FSH and LH during folliculogenesis. *Reprod Biomedicine Online.* 2011; 15: 326-37.
11. Bowen R. Gonadotropins: Luteinizing and Follicle Stimulating Hormones. [Online] 2004. [Cited 2011 July]. Available from: URL: http://arbl.cvmbs.colostate.edu/hbooks/pathphys/endocrine/hy_poptit/lhfsh.html
12. Gleicher N, Andrea W, David HB. Defining ovarian reserve to better understand ovarian ageing. *Reprod Biol Endocrinol.* 2011; 9: 23.