



CODEN [USA]: IAJPBB

ISSN: 2349-7750

**INDO AMERICAN JOURNAL OF
PHARMACEUTICAL SCIENCES**<http://doi.org/10.5281/zenodo.1136526>Available online at: <http://www.iajps.com>

Research Article

**CYTOTOXIC EFFECT OF LOW MOLECULAR WEIGHT
PROTEIN ISOLATED FROM *CROTALARIA PALLIDA*****Salman Dinakar M^{1*} and Govindappa M²**¹Department of Biotechnology, Shridevi Institute of Engineering & Technology, Tumkur-572106²Department of Biotechnology, Dayananda Sagar College of Engineering, Shavige Malleshwara Hills, Kumaraswamy Layout, Bangalore-78**Abstract:**

Low molecular weight proteins (LMWPs) were isolated from Crotalaria pallida using Sodium Dodecyl Sulfate Polyacrylamide Gel Electrophoresis (SDS-PAGE). The antimetabolic assay has been investigated using onion root tips whereas apoptosis assay was conducted on MCF-7 cell lines. A 14 kDa protein has been identified as potent antitumor agent.

Key words: *Low Molecular weight proteins, SDS-PAGE, apoptosis, antitumor agent, Crotalaria pallida.*

Corresponding author:**Salman Dinakar M,**

Department of Biotechnology,

Shridevi Institute of Engineering & Technology,

Tumkur - 572106.

QR code



Please cite this article in press as Salman Dinakar M and Govindappa M., *Cytotoxic Effect of Low Molecular Weight Protein Isolated From Crotalaria Pallida*, Indo Am. J. P. Sci, 2018; 05(01).

1. INTRODUCTION:

Breast cancer is a type of carcinoma. Incidence of breast cancer is increasing in Indian women. Cancer can be suppressed by the balance between proliferation and apoptosis. Investigation of novel agents against breast cancer is highly essential due to the adverse effect of conventional treatments. Several phytochemicals have been investigated as potent agents against cancer [1-6]. The investigation is aimed to study the effect of low molecular weight protein extracted from *Crotalaria pallida* against breast cancer cell lines. MCF-7 cell lines are chosen for the study. The size of LMWP ranges up to 69 KDa. Elimination of cancer cells by early apoptosis is preferred over other forms of cell growth inhibition. Apoptosis directly leads to tumour regression and reduces the risk of selecting more aggressive and drug resistant phenotypes that are often responsible for tumour regrowth and treatment failure [7-10].

2. MATERIALS AND METHODS:

A. Separation of proteins by SDS PAGE:

Sodium dodecyl sulfate-polyacrylamide gel electrophoresis (SDS-PAGE) is a reliable method for determining the molecular weight (MW) of an unknown protein.

SDS-PAGE gel electrophoresis was performed on resolving and stacking gel at 16% and 4% concentrations of acrylamide: bisacrylamide respectively. Sample buffer was added to 20 μ l of partially purified protein, molecular weight marker (low range from Aristogene biosciences limited, Bangalore) and heated for 5 minutes at 95°C in water bath. 20 μ l of each mixture was loaded in the wells. The electrophoresis unit was filled with 1X running buffer and the electrophoresis was carried out at 50 V initially for 30 minutes and then at 100 V. Gels was placed in the staining solution for 2-3 hr at 37°C with agitation, followed by its destaining in the destaining solution with agitation, overnight. The destained gels were immediately photographed. Next, a graph of log MW vs. relative migration distance (Rf) is plotted, based on the values obtained for the bands in the MW standard. The MW of the unknown protein band is then calculated by interpolation using this graph. The key to determining MW accurately is selecting separation conditions that will produce a linear relationship between log MW and migration within the likely MW range of the unknown protein [11-13].

B. Determination of antimetabolic activity:

Healthy and equal sized bulbs of common onions were chosen and series of bulbs are grown in test chemicals. The loose outer scales of bulbs and old roots were removed with the help of sharp and

pointed forceps so as to expose the root primordia. A series of bulbs were then placed distilled water at a temperature. When the roots are 2-3cm, the sample was added to the water and incubated for 24hr. After treatment, the bulbs were washed thoroughly under running tap water. The root tips from each bulb were plucked and fixed in Farmer's fluid (glacial acetic acid: ethanol:: 1:3) for 24 hours. The root tips were hydrolyzed in 1N HCl at 60°C for 1 minute and transferred to a watch glass containing aceto-orcin and 1 N HCl in 9:1 ratio. They were then heated intermittently for 5-10 minutes, covered and kept aside for 20 minutes. The tip of the root was then cut with sharp blade and placed on a glass slide in a drop of dye and covered with cover slip. The root tip was squashed gently by tapping with a dissection needle and observed under oil immersion objective [14-18].

C. Screening for Cytotoxicity activity of protein on breast cancer cell lines (MCF-7) [19-22]:

After trypsinization 120,000 cells were taken from the T- Flask for plating for MTT Assay in a 15ml centrifuge tube. The volume was made up to 6.5ml by adding 10% DMEM/F12 Media. Excluding the outermost rim, 100 μ l (Approx... 2000 cells) was added to each of the remaining wells in a 96- well microtitre plate. Media control, vehicle control, positive control and cell with different drug concentrations were incubated. 200 μ l of MTT dye was added and incubated. The plate was removed from the incubator. The purplish residue in most of the wells was due to formazan crystals. Carefully the spent media was removed from the wells, column wise, replacing it with 100 μ l of crude DMSO. The crystals formed at the bottom of the wells were not disturbed. The plates were incubated for 10 minutes at 37°C and 5% CO₂. This allows time for the crystals to dissolve in the DMSO giving a purplish solution in most wells. Row by row, the contents of the wells was loaded into cuvettes to be used with the spectrophotometer. Using a Spectrophotometer, the absorbance of the cuvettes was measured at 545nm. The results were recorded.

D. Acridine orange assay [23-26]:

Cells from malignant cell line MCF-7 were exposed to 14 kDa proteins (150 μ g/mL) for apoptosis induction, and then were stained with Acridine orange prior and examined to detect fluorescence.

3. Results and discussion:

A. Determination of molecular weight of LMW proteins:

The protein bands, obtained in different lanes, are calculated by using Rf values (Fig-1). The molecular weight ranges from 6-27 KDa (Table-1). The distance of dye front is 4.5cm.

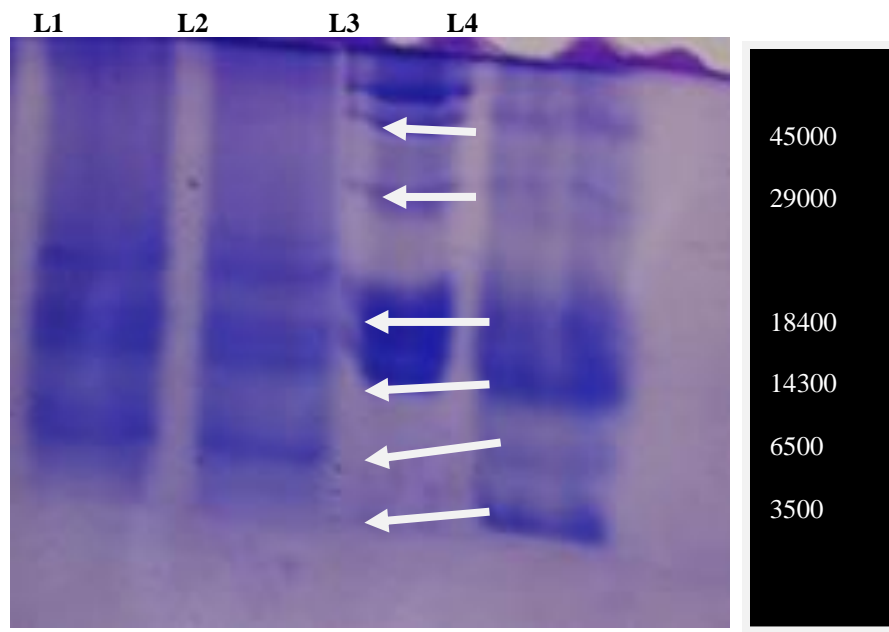


Fig 1: SDS PAGE: L1 and L2 are lane 1 and 2 with purified protein sample bands; Lane 3-Medium range molecular markers; Lane 4-low range molecular markers; Distance of Dye front is 4.5cm

Table 1: Molecular weight and Rf values of protein sample after comparing with standard markers

Purified Protein bands from well to towards dye front	Distance travelled (mm)	Rf	Molecular weight (Da)
1	2.5	0.55	27610
2	2.8	0.62	24370
3	3.4	0.75	18230
4	3.5	0.77	14250
5	4.0	0.88	6610

B. Determination of antimitotic activity [17-30]:

The LMWP of 14 kDa (T1) and 18 kDa (T2) have restricted the cell division at various stages, mainly by induction of cell restriction in prophase. Chromosomal aberrations (CAs), arising at each level, proved that the sample has antimitotic activity. The CAs were characterized by change in either total number of chromosomes or in chromosomal structure, which occur as a result of the exposure of chemical treatment. To evaluate the different chromosomal abnormalities, several types of CAs are

considered in different stages of cell cycle (prophase, metaphase, anaphase and telophase) (Fig-2). Micronuclei can be spontaneously originated due to the development of the isolated chromosome that results from an unequal distribution of genetic material. Cells, bearing micronuclei, were observed at different stages of cell cycle, although most of them were involved in interphase and prophase stages. Chromatin bridges could happen during translocation of unequal chromatid exchange and cause structural chromosome mutations.

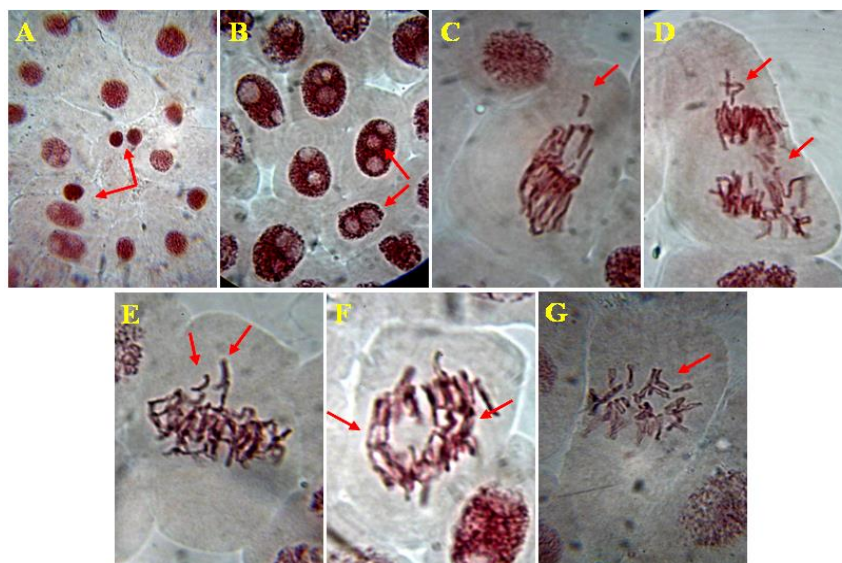


Fig 3: Cellular, Nucleolar and chromosomal abnormalities cells of treated onion root tips, A) Cell shrinkage, B) Binuclear and multi nucleolar cells, C) Chromosomal fragmentation at metaphase, D) Chromosomal bridge and diversions in early anaphase, E) Chromosomal fragmentation at metaphase, F) Chromosomal bridges at anaphase and G) Abnormal chromosomal distribution and fragments at metaphase.

C. Screening for Cytotoxicity activity of protein on breast cancer cell lines (MCF-7):

The LMWP has shown the cytotoxic effect on MCF cell lines. The cell viability decreased with increased concentration. The IC_{50} was determined as 150 μ g. The cell viability was reduced as the concentration increased

Table 2: OD values obtained at different concentration by MTT assay after 24hr incubation

24hour data			
Concentration	OD Value	Corrected	Viability
Blank (DMSO).	0.349		
Media Control	1.264	0.915	
Vehicle Control	1.243	0.894	97.70492
Positive Control	0.496	0.147	16.06557
50ug	1.158	0.809	88.4153
100ug	0.963	0.614	67.10383
150ug	0.894	0.545	59.56284
200ug	0.647	0.298	32.56831
250ug	0.514	0.165	18.03279

Table 3: OD values obtained at different concentration by MTT assay after 48hr incubation

48hour data			
Concentration	OD Value	Corrected	Viability
Blank	0.361		
Media Control	1.341	0.98	
Vehicle Control	1.296	0.935	95.40816
Positive Control	0.438	0.077	7.857143
50ug	1.203	0.842	85.91837
100ug	1.028	0.667	68.06122
150ug	0.849	0.488	49.79592
200ug	0.691	0.33	33.67347
250ug	0.527	0.166	16.93878

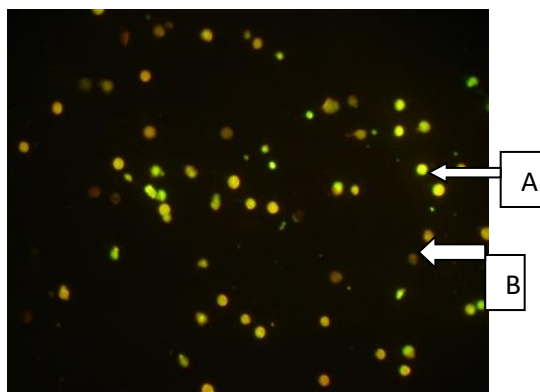


Fig. 4: Acridine orange assay: A) apoptotic cell; B) necrotic cell

D. Acridine orange assay [30-35]:

Progressively, several nuclear apoptotic bodies, containing the fragmented DNA, were visible, appearing as green fluorescent patches (Fig-6). In an advanced apoptotic stage the disintegration of apoptotic bodies lead to total nuclear DNA fragmentations typical of late apoptosis (orange to red stained nuclei). These data confirm that apoptotic-like bodies are fundamental marks of apoptosis in plants and animals.

4. CONCLUSION:

The 14kDa protein, isolated from *Crotalaria pallida*, can be used to prevent the progression of cancer in susceptible individuals as it has shown antimetabolic properties and apoptotic activity.

5. ACKNOWLEDGEMENT:

We thank Mr. Purushotham, Sri Raghavendra Biotech Pvt. Ltd for his support to carry out apoptosis assay.

REFERENCES:

1. Anand P, Kunnumakkara AB. Cancer is a preventable disease that requires major lifestyle changes. *Pharm Res*, 2008; 25 (9): 2097–116.
2. Anya NA, Milne, Cornelis JHV, Elma KK, Folkert MM, Marnix Jansen, Ralph Carvalho. Cyclin E low molecular weight isoforms occur commonly in early onset gastric cancer and independently predict survival. *Journal of Clinical Pathology*, 2008; 61:184-191.
3. Engwegen J.Y.M.N. Clinical proteomics: searching for better tumour markers with SELDI-TOF Mass spectrometer. *Trends Pharmacol Sci*, 2006; 27(5):251-259.
4. Fadnes P, Kruger PG, Kleppe K, Lossius I, Sjastad K. Isolation, properties and nucleolytic degradation of chromatin from *Escherichia coli*. *J Gen Microbiol*, 1982; 128(12):3037-50.
5. Grasl-Kraupp B, Ruttikay-Nedecky B, Koudelka H, Bukowska K, Bursch W, Schulte-Hermann R. In situ

detection of fragmented DNA (TUNEL assay) fails to discriminate among apoptosis, necrosis, and autolytic cell death: a cautionary note. *Hepatology*, 1995; 21 (5):1465–8.

6. Gyroffy B, Materna V, Matkowski R, Pudenko M, Surowiak P, Wujar A. Elevated metallothionein (MT) expression in invasive ductal breast cancers predicts tamoxifen resistance. *Histol Histopathol*, 2005; 20:1037-1044.

7. Iwata M, Myerson D, Torok-Storb B, Zager RA. An evaluation of renal tubular DNA laddering in response to oxygen deprivation and oxidant injury. *Journal of the American Society of Nephrology*, 1994; 5 (6): 1307–1313.

8. Jemal, A, Bray F, Center MM, Ferlay J, Ward E, Forman D. Global cancer statistics. *CA: A Cancer Journal for Clinicians*, 2011; 61 (2): 69–90.

9. Moravec RA, Riss TL. Use of multiple assay endpoints to investigate the effects of incubation time, dose of toxin and plating density in cell-based cytotoxicity assays. *Assay Drug Dev Technol*, 2004; 2 (1): 51–62.

10. Wyllie AH. Glucocorticoid-induced thymocyte apoptosis is associated with endogenous endonuclease activation. *Nature*, 1980; 284 (5756): 555–556.

11. Abozaid SA, Baraka HN, Ibrahim AS, Gohar AA, Badria FA. Anticancer activity of plant derived proteins against human tumor cell lines. *J Drug Disc Therap*, 2014; 2(13): 60-69.

12. Ayyanar M, Ignacimuthu. Medicinal plants used by the tribals of Tirunelveli hills, Tamilnadu to treat poisonous bites and skin diseases. *Indian J T Know*, 2005; 4(3):229-236.

13. Balaji P, Arun KP, Senthil KR, Meenakshi SM, Brindha P. Isolation and identification of adaptogenic protein from *Cicer arietinum* Linn. *Int J Ph Phar Sci*, 2012; 4(2): 79-82.

14. Bharadwaj J, Yadav SK. A common protein extraction protocol for proteomic analysis: horse gram a case study. *American J Agri Bio Scie*, 2013; 8(4): 293-301.

15. Boohaker RJ, Lee MW, Vishnubhotla P, Perez JM, Khaled AR. The use of therapeutic peptides to target and to kill cancer cells. *Cur Med Chem*, 2012; 19(22):3794-3804.
16. Cinglia C, Pinto G, Sansone C. Acridine orange/Ethidium bromide double staining test: A simple In-vitro assay to detect apoptosis induced by phenolic compounds in plant cells. *All J*, 2010; 26(2):301-308.
17. Govindappa M, Bharath N, Shruthi HB, Sadananda TS, Sharanappa P. Antimicrobial, antioxidant and in vitro anti-inflammatory activity and phytochemical screening of *Crotalaria pallida* Aiton. *Afr J Phar Pharm*, 2011; 5(21):2359-2371.
18. Hew CS, Khoo BY, Gam LH. The anticancer property of proteins extracted from *Gynura procumbens*(Lour.)Merr. *PLOS ONE*, 2013; 8(7):1-10.
19. Kandappa HR, Pillay K, Obulum VSR, Sharma VGK, Govender P. In vitro Antifungal, Antioxidant and Cytotoxic Activities of a Partially Purified Protein Fraction from *Atlantia monophylla* Linn (Rutaceae) Leaf. *Trop J Pharm Res*, 2015;14(3): 487-493.
20. Khan MKA, Siddiqui MH, Akhtar S, Ahmad K, Baig MH, Osama K. Screening of plant-derived natural compounds as potent chemotherapeutic agents against breast cancer: An in silico approach. *J Ch Phar Res*, 2015; 7(1):519-526.
21. Khanna N, Sharma S. *Allium Cepa* Root Chromosomal Aberration Assay: A Review. *Indian J Pharm Biol Res*, 2013; 1(3):105-119.
22. Kiruthiga R, Rakkimuthu R, Aravinthan KM. Antibacterial activity of *Crotalaria pallida* Aiton. (Fabaceae). *Indian J Pharm Biol Res*, 2014; 2(1):82-85.
23. Kobon TE, Thongaram P, Roytrakul S, Meesuk L, Chumnanpuen P. Prediction of anticancer peptides against MCF-7 breast cancer cells from the peptidomes of *Achatina fulica* mucus fractions. *Com Str Biotech J*, 2016; 14:49-57.
- [24]. Rai SK. Medicinal plants used by Meche people of Jhapa District, Eastern Nepal. *Our Nat*, 2004; 2:27-32.
25. Padal SB, Chandrasekhar P, Vijayakumar Y. Ethnomedicinal uses of some Fabaceae family plants of Narsipatnam division, Visakhapatnam District, Andhra Pradesh, India. *Inter J Inn Res Dev*, 2013; 2(6):808-822.
26. Saha K, Moyano DF, Rotello VM. Protein coronas suppress the hemolytic activity of hydrophilic and hydrophobic nanoparticles. *Mater Horiz*, 2014; 1:102-105.
27. Selmi SS, Abdelfattah TS, Mostafa FD. Deregulation of Mitosis Progression and Cytotoxic Effect Triggered in *Allium cepa* L. Roots by *Rubus sanctus* Schreber Extract. *Life Sci J*, 2014; 11(11):1047-1058.
28. Sofi MS, Sateesh MK, Bashir M. Screening of the ethnobotanicals against MDA-MB-231 and MCF-7 breast cancer cell lines. *Inter J Phytopharmacy*. (2014). 49(6):140-147.
29. Song L, Ren S, Yu R, Yan C, Li T, Zhao Y Purification, characterization and in vitro anti tumor activity of proteins from *Arca subcrenata* Lischk. *Mar Drugs*, 2008; 6:418-430.
30. Ukil S, Laskar S, Roy RN. Physicochemical characterization and antibacterial activity of the leaf oil of *Crotalariaia pallida* Aiton. *J Taibah Uni Sci*, 2016; 10(4):490-496.
31. Vinjamuri S, Shanker D, Ramesh RS, Nagarajan S. In vitro evaluation of hemolytic activity and cell viability assay of hexanoic extracts of *Bridella ferruginea* Benth. *World J Phar Pharmaceutical Sci*, 2015; 4(7):1263-1268.
32. Wladyka B, Piejko M, Bzowska M, Pieta P, Krzysik M, Lora I G, Bukowski M, Sabat A, Friedrich A W, Bonar E, Międzobrodzki J, Dubin A& Mak P. A peptide factor secreted by *Staphylococcus pseudintermedius* exhibits properties of both bacteriocins and virulence factors. *Sci Repo*, 201; 5:1-15.
33. Yau T, Dan X, Ng CCW, Ng TB. Lectins with Potential for Anti-Cancer Therapy. *Molecules*, 2015; 20: 3791-3810.
34. Zandi K, Farsangi MH, Nabipour I, Soleimani M, Khajeh K, Sajedi RH, Jafari SM. Isolation of a 60 kDa protein with in vitro anticancer activity against human cancer cell lines from the purple fluid of the Persian Gulf sea hare, *Aplysia dactylomela*. *Afr J Biotechnol*, 2007; 6(11):1280-1283.
35. Zohra M, Fawzia A. Hemolytic activity of different herbal extracts used in Algeria. *Inter J Pharm Sci Re*, 2014; 5(8):495-500.