



CODEN [USA]: IAJPBB

ISSN: 2349-7750

**INDO AMERICAN JOURNAL OF
PHARMACEUTICAL SCIENCES**<http://doi.org/10.5281/zenodo.2593791>Available online at: <http://www.iajps.com>

Research Article

**A CROSS-SECTIONAL RESEARCH TO ASSESS THE
AWARENESS ABOUT ORAL CANCER AMONG DENTAL
STUDENTS BY COMPARING GENDER WISE LEVEL OF
AWARENESS**¹Dr Anum Mehmood, ²Dr. Aitka, ³Zarwish Akbar¹Demonstrator, University College of Medicine and Dentistry, ²PMC Faisalabad Dental Section,
³University Medical and Dental College Faisalabad (UMDC).**Article Received:** December 2018 **Accepted:** February 2019 **Published:** March 2019**Abstract:**

Objective: To review the undergraduate dental student OR dentists regarding the information, anticipation and recognition of oral cavity cancer.

Methodology: We conducted this cross-sectional research from March to December 2017. A pre-authenticate survey was used to analysis of oral cavity cancer responsiveness amongst scholar dental student. A whole of 140 students, House surgeons or ability member contributes to this review.

Result: Out of 140 applicants= fifty-eight% (n=81) demonstrate elevated consciousness thirty-four % (n=47) demonstrate reasonable responsiveness and eight % (n=12) were establish have little intensity of responsiveness concerning of mouth cancer. Ability member was a description to have an important elevated intensity of information in contrast with residence officer or student concerning danger factor and medical features of the syndrome.

Conclusions: These learning things to see for reflection concerning development to scholar dental learning as fine as in meeting or symposiums.

Keyword: Consciousness, Mouth Carcinoma, Dentists, Dental Student.

Corresponding author:**Dr. Anum Mehmood,**

Demonstrator, University College of Medicine and Dentistry.

QR code



Please cite this article in press Anum Mehmood et al., A Cross-Sectional Research To Assess The Awareness About Oral Cancer Among Dental Students By Comparing Gender Wise Level Of Awareness., Indo Am. J. P. Sci, 2019; 06(03).

INTRODUCTION:

Mouth cancer may begin as a primary wound originating from the mouth tissue. It is frequently malignant, so it is inclined to metastasize to further spaces from its position of beginning [1]. There are numerous kinds of mouth cancer, but approximately ninety % are squamous cells carcinomas' initiating in the tissues that column the oral cavity and lips Squamous cell carcinoma is epithelial in origin or it is malignant whereas further tumor-like amio-sarcoma is mesenchymal in derivation and is also malevolent [2]. Squamous cells carcinoma usually engages or a further site like the ground of the oral cavity, cheek inside layer, gingival (gums), lips, and palate. Dissimilar various histological kinds like teratoma adenocarcinoma resulting from a main and slight salivary gland, lymphoma from tensile and further lymphoid tissues, or melanoma from the pigment-producing cell of mouth mucosa. Mouth squamous cells carcinoma has diverse medical appearance including, Exo-phytic (mass appearance, fumigate papillary, verruciform), Entophytic (persistent, Warren, ulcerated), Leukoplakia (colorless scrap), Erythrolein (red scrap) Erythroleukoplania (unite red-white scrap), obliteration of fundamental bone when there show on radiographs as a moth-eaten radio-latency with distracted boundaries [3]. The Etiology of squamous cells carcinoma depending on numerous issues. danger issue of mouth squamous cells carcinoma can alienate into 2 groups, extrinsic or intrinsic. Extrinsic aspect is smoking, smokeless tobacco, actinic radiation, infection, alcohol; sexually transmitted infection like syphilis or radiation. Intrinsic factor is universal require of nourishment and unsuitable nourishment or microcytotic anaemia [4]. Mainly usually squamous cells carcinoma is caused by smoke. Smokeless tobacco (spit tobacco) is the next important reason of mouth squamous cells patient with mouth carcinoma is 2 – 3 time larger than universal residents. occurrence velocity of mouth squamous cells carcinoma in dissimilar nations in gents are as pursue, the USA 7.8/0.1 million citizens, People state Of China 3/ 0.1 million peoples, U K 5 /0.1 million peoples Pakistan 15/0.1 million peoples, carcinoma or actinic radiation is the 3rd one. The

amount of smoker (eighty %) between India 12/0.1 million peoples, Spain 11/0.1 million peoples.

METHODOLOGY:

We conducted this cross-sectional research at Mayo Hospital, Lahore from March to December 2017. The major purpose of this learning was to review the scholar dental student or dentists concerning the information, anticipation and recognition of mouth cancer. An entire of one hundred and forty contributors was interview by using a planned survey Performa. Out of this one hundred and forty, seventy-four were a dental student, twenty-six were a home officer, twenty-one were older, listed or protester, and ninety were helper professor, connected professor. By sexual category seventy-four were gents or seventy-seven were women. A survey comprising of 10 question was put the plan of the survey was assorted. Out of these 10 questions six were congested or four question were unlocking. Information altitude was review by in-between the answer into three groups elevated, modest or little. Those response were put in elevated categories which were most appropriate, the answers that were neither accurate nor incorrect were located in the reasonable group, and the response that was incorrect were located in a little group. Examination of the mouth of consequence was approved out use SPSS or capacity were completed by chi –four-sided figure examination.

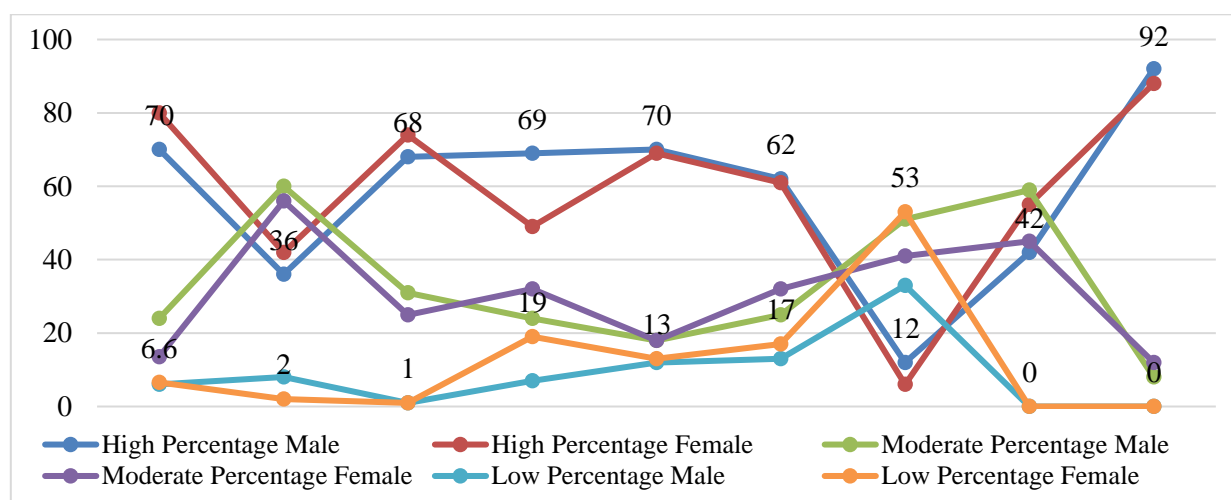
RESULT:

As extreme as the problem of dissimilar medical appearance of mouth cancer is worried, P-Value is .035, which is a reduced amount of than .05, so it can be believed that there is no important arithmetical connection among contact or sickness. There is no important arithmetical connection among male or females set ($P > 0.5$). As extreme as the subsequent question is worried (1), what is the significance of record captivating in the discovery of mouth cancer (2) What is a mainly ordinary place of mouth cancer-Value<.05.it explain that there is no arithmetical connection of contact through diseases.

In another question P-Value>.05 that explains that there is important arithmetical involvement of contact with the infection.

Table – I: Appraisal of information intensity concerning mouth cancer by sexual category (140)

Questions topics	High Percentage		Moderate Percentage		Low Percentage		P-Value
	Male	Female	Male	Female	Male	Female	
significance of record taking	70	80	24	13.5	6	6.6	0.112
danger factors of mouth cancer	36	42	60	56	8	2	0.253
assessment patient's mucosa	68	74	31	25	1	1	0.948
dissimilar clinical appearance of mouth cancer	69	49	24	32	7	19	0.035
event of mouth cancer in Karachi	70	69	18	18	12	13	0.891
Most ordinary location of mouth cancer	62	61	25	32	13	17	0.687
change in mouth	12	6	51	41	33	53	0.814
Have enough information	42	55	59	45	0	0	0.194
Like further information	92	88	8	12	0	0	0.642

**Table – II:** Questions topic and people by description (140)

Questions Topic	Student	House officer	Demonstrator	Senior faculty
Significance of record taking	74	26	21	19
Danger factors for mouth cancer	74	26	21	19
Assessment of patient's mucosa	74	26	21	19
Dissimilar clinical appearance of mouth cancer	74	26	21	19
Event of mouth cancer in Karachi	74	26	21	19
Most ordinary site of mouth cancer	74	26	21	19
Change in mouth	74	26	21	19
Having enough information	74	26	21	19
Like further information	74	26	21	19

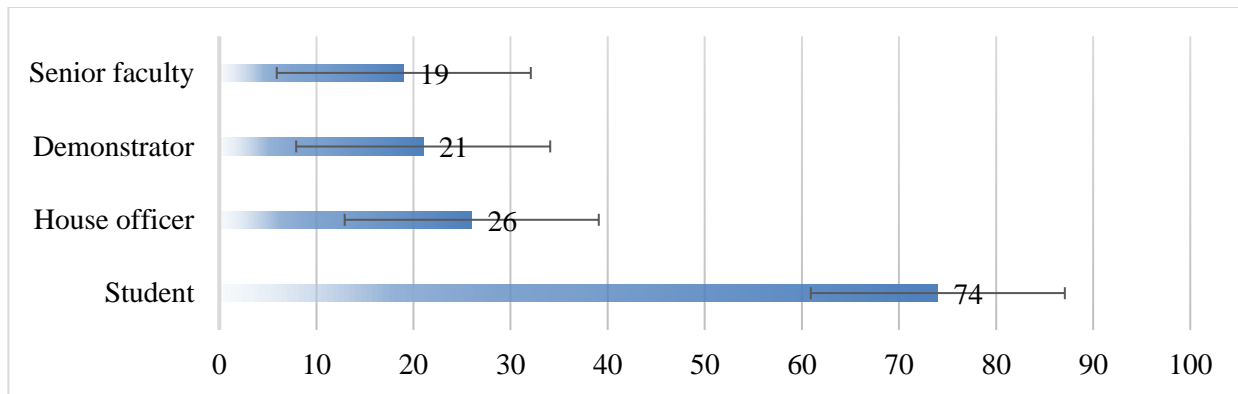


Table – III: Questions topic and information intensity evaluation by description (140)

Distribution		Significant of record taking	Danger factors for mouth cancer	Examination of patient's mucosa	Dissimilar clinical appearance of mouth cancer	Event of mouth cancer in Karachi	Most ordinary location of mouth cancer	Change in mouth	Having enough information	Like further information
Students	High Percentage	77	40.6	63	66.4	70	61	9	48	97
	Moderate Percentage	16.4	53.4	37	8	23	30	17	52	3
	Low Percentage	7.4	6	0	25.6	7	9	74	0	0
House Officers	High Percentage	96.4	38	65	65	50	65	11	46	92
	Moderate Percentage	3.4	62	35	5	40.4	30	4	54	8
	Low Percentage	0	0	0	30	9.4	5	85	0	0
Demonstrators	High Percentage	66.4	42	66.6	61	59	90.6	4	42	94
	Moderate Percentage	30.6	47	33.6	39	9	6.4	38	48	6
	Low Percentage	3.4	11	0	0	22	3	58	0	0
Senior Faculty	High Percentage	74	23	94	84	89.4	37	49	51	100
	Moderate Percentage	24.5	63	6	12	10.4	37	21	49	0
	Low Percentage	1.6	14	0	4	0	26	30	0	0

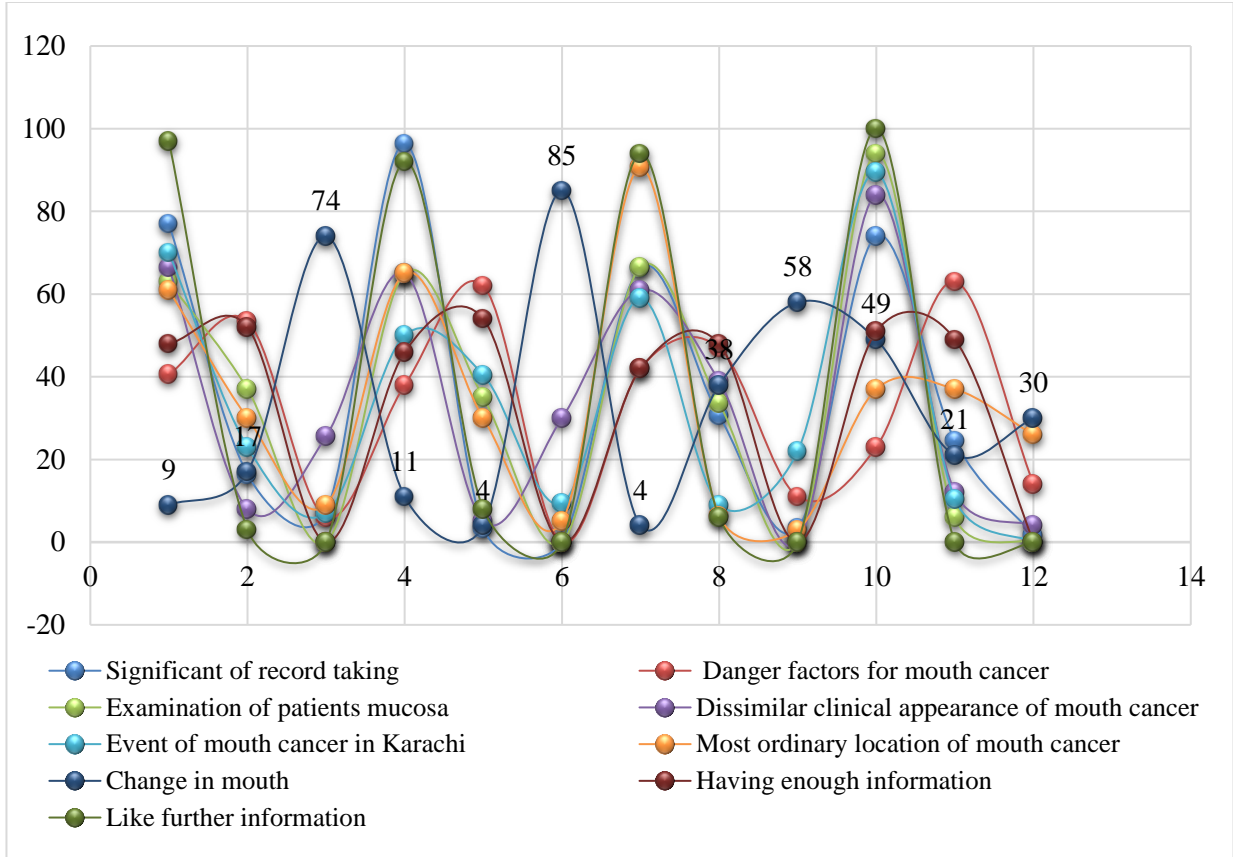
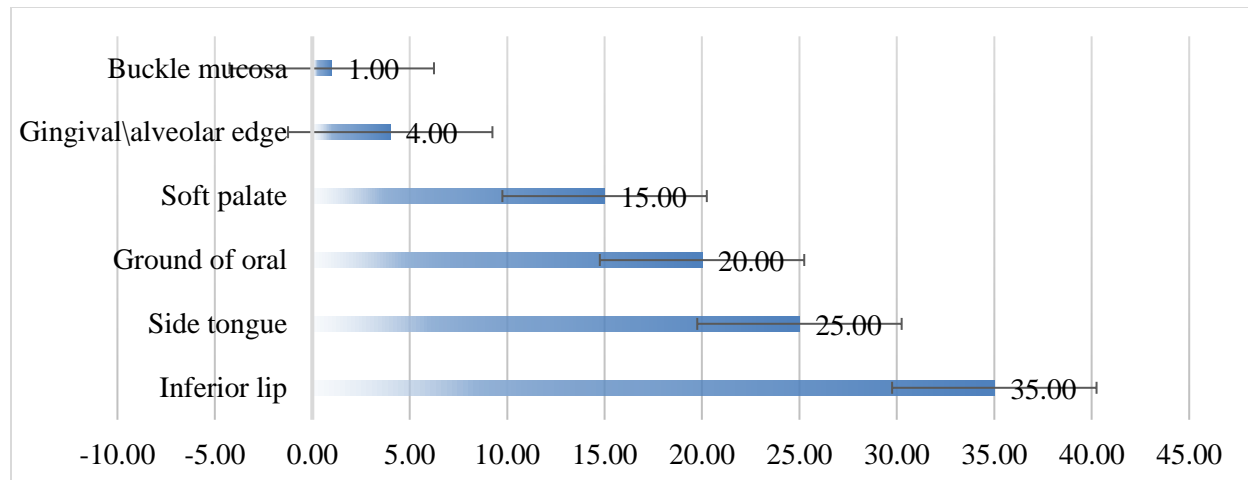


Table – IV: Estimated qualified occurrence of mouth carcinoma

Site	Relative Incidence
Inferior lip	35.00
Side tongue	25.00
Ground of oral	20.00
Soft palate	15.00
Gingival/alveolar edge	4.00
Buckle mucosa	1.00



DISCUSSION:

Record taking of patients is extremely significant in the analysis of mouth cancer. Even as taking the first patients record, the dentist should moderate danger issue that is connected to fitness that is proceeding or present sickness, medication, wellbeing behaviour, behaviour, and existence. appraisal that whether the patients have undergone any operation, admitted to the hospital before this, what medicine is he taking, patient's diet, smoke or alcohol utilization are entering to appreciate the universal fitness of patients. Subsequent to this it is essential to recognize the possible for mouth infection and if handling requirements change [5]. As extreme as record taking in this investigation is worried by sexual category seventy % male or seventy-four % female declare that record attractive is significant or by description seventy-six % student, 96.6% house officer, 66.6 % demonstrator and senior registrar, seventy-four % supporter professor, helper professor or professors say that record attractive is significant. Those over declare have elevated intensity of consciousness as they consider that record captivating is significant while relaxing of people of learning have modest or little intensity of consciousness [6].

A slight constituent of tobacco is nicotine. When tobacco is exhaled nicotine is engrossed through the nasal or mouth mucosa and through the permeable exterior of the lung, when tobacco burn is inhaled. Worldwide facts complete on occurrence of smoke cigarette show that on a standard 100, 000, 000, 0 gents in the entire above the globe are smokers with thirty-five % in first globe, fifty % in two or three globe state and approximately 250 million women's in globe smokers with twenty-two% in first globe and nine % in 2 and three globe state [7]. At slightest twenty-five % of young people in the globe is having a smoke. His captivating, patient's diet, smoking or alcohol utilization is Smokeless tobacco is also a

danger issue of mouth cancer. In United State America seven% of student up to matriculation rank are currently used smokeless tobacco. Radiation is also a danger issue for mouth cancer. Danger issue of mouth cancer put in the survey was smoking, smokeless tobacco, or radiation. This danger issue is given precedence as one for tobacco, two for smokeless tobacco or three for radiation. By sexual category thirty-six % Male, forty-two % female has elevated altitude of consciousness. Sixty % male, fifty-six % female have reasonable consciousness intensity. Eight % male or two females have lowly consciousness intensity concerning mouth cancer [8]. Numerous diseases (general or restricted) have symptoms that show on the face, head and neck or intra-orally., assessment region of the head & neck. Decide gross performance of cranial anxiety. Thyroid, Lymph node or Lips. Intraoral assessment involves assessment of buckle mucosa, palate, gingival, pharynx, larynx, teeth. The dentist is not restricted to the mouth opening while responsibility patient's assessment. Oral squamous cells carcinoma has a figure of dissimilar medical appearance. Most ordinary early on appearance is Erythroplakia. Approximately ninety % biopsy example of erythroplakia inclines to squamous cells carcinoma. Leukoplakia stands on a subsequent group of the scientific appearance. Speckled leukoplakia, unrelenting mouth bulge for > 4 weeks. Mouth ulceration for > 4-week, painful tongue. Difficulty swallows Jaw or facial inflammation, effortless neck bump, mysterious tooth mobility, and Truisms. Squamous cells carcinoma that has penetrated deep into connective tissue may have small exterior modify but demonstrate as hard indurate area with a linked beat of tooth mobility. Carcinoma that arises from gingival can penalty is loosening of teeth. Even as the carcinoma that infiltrates profound into the mandible with the participation of lesser alveolar

nerve can consequence is paraesthesia of teeth and inferior lips. As extreme as facts from investigating are worried, by sexual category sixty-nine % male have elevated the intensity of information and say that erythroplakia and leukoplakia are the main ordinary clinical presentation of the mouth cancer. Twenty-four % male has the reasonable intensity of information and say that inflammation is the appearance of mouth cancer while seven % say that pains are the untimely medical appearance of mouth carcinoma. By description 66.6% have elevated, eight % have reasonable or 25.6 % have less intensity of information among student. Along with house officer sixty-five % have elevated, five % have reasonable and thirty % have little information. Demonstrator or senior registrar has sixty-one % elevated or thirty-nine% reasonable information. Eighty-four % professor has elevated, twelve have reasonable and 4% have a short altitude of knowledge.

Throughout an exact instance era, an illness which develops in inhabitant with a new figure of case in called occurrence. The occurrence of SCC in superior in maturation states particularly Asian States like Pakistan, India or Bangladesh. In United State of America occurrence of cancer record for 7.7 per 100,000 inhabitants. In Republican of China, it is 3 per 100,000 populations. The United Kingdom has mouth cancer 5 per 100,000 In Pakistan, it is 15 per 100,000 populations and is mainly ordinary in Karachi since people often consume Pan, challis or cigarette. In Karachi, it accounts for thirty-five % of mouth cancer universal. In India occurrence is 12 per 100,000 inhabitants or in Spain, it accounts for 11 per 100,000 populations. In my learning by sexual category seventy % male have elevated, eighteen % male have reasonable and twelve % have the small intensity of consciousness concerning occurrence. Among female sixty-nine % have an elevated, eighteen % have reasonable or thirteen % have the small intensity of information. The base of the oral cavity in a place of twenty % of whole SCC or approximately 3rd main ordinary site. Flexible palate, gingival or alveolar edge and buckle mucosa account for fifteen %, four%, one% of SCC correspondingly. As by sexual grouping in IIDC, 62% male have elevated, twenty-five % have reasonable and thirteen % have small consciousness. Among female sixty-one % have elevated, twenty-two% have reasonable or seventeen % have little intensity of information.

CONCLUSION:

Out of one hundred and forty participants of the learning, 81 (58%) had elevated intensity of information or 47 (34%) have reasonable or 12 (8%) have little information level. Being a dental student or dental professional, it is currently ahead whole to

have highest consciousness information concerning mouth cancer or seminars and lecture should be conducted to give the highest information. This learning highlight for reflection concerning development to scholar dental teaching as fine as in discussion or symposium.

REFERENCES:

1. R.C. Page. Critical issues in periodontal research. J Dent Res 1995; 74:1118-28.
2. Slavkin H.C. Gene regulation in the development of the oral tissues. J Dent Res 1988; 67:1142-9.
3. Office for National Statistics (ONS). MB1 no.38. Registrations of cancer diagnosed in 2007. England. Crown; designation 66.5% have high,8% have moderate and 25.5% have 2010.
4. Erikson JM. The Tobacco Atlas. <http://www.who.int/tob> Accor/website (retrieved on 22 November 2011).
5. Rainey L, Melvin Klux L, McClain E, Morgan L, Lohr KN. Tobacco use: Prevention, cessation and control Evidence-Based Practice. 2006; 140: 1-120.
6. Cowan J.M, Beckett M.A, Swan A.S, Weichsel Baum. R.R. Cytogenetic evidence of the multistep origin of head and neck squamous cell carcinomas. J Nat Cancer 1992; 84(10):793-7.
7. Robichaux S.M. Genetic Considerations of Diseases and Disorders that Affect the Oral Cavity. Part I. Overview, Dental Decay, Periodontal Disease, Diabetes. Journal of Periodontology 2000; 71(4) 664-78.
8. Chuffer R. Lombardi T. Premalignant lesions of oral mucosa. Oral Oncol 2002; 38 (2); 125.