



CODEN [USA]: IAJ PBB

ISSN: 2349-7750

**INDO AMERICAN JOURNAL OF  
PHARMACEUTICAL SCIENCES**<http://doi.org/10.5281/zenodo.1467695>Available online at: <http://www.iajps.com>**Research Article****IMPORTANCE OF AWARENESS AND KNOWLEDGE ABOUT BREAST  
CANCER AND DISEASE PREVENTION AMONG PAKISTANI WOMEN****<sup>1</sup>Dr. Muhammad Nouman Khan, <sup>2</sup>Dr. Mavra Akhtar, <sup>3</sup>Dr. Syed Murtaza Ali Zaidi**<sup>1</sup>Div. HQ's Teaching Hospital, Mirpur AJK<sup>2</sup>Sir Gangaram Hospital Lahore<sup>3</sup>Allama Iqbal Medical College Lahore**Abstract:***Objective: To make the females aware about breast cancer is the main goal of this study.**Research questions: How can a female retain herself from the disease of cancer?*

*In both developed and developing countries, cancer in breast in females is a noticeable problems. All over the world including Pakistan, the second most logic of death of females is breast cancer. Mainly in developing countries like Pakistan, the extent of breast cancer is increasing quickly according to the recent world cancer measurements. For the health professional and policy maker's donors, the top of the priority list is the breast cancer. The increasing situation might not controlled, if care is not taken on time. Keeping in view the final objectives, to attend this swiftly increasing medical problem, there is a need to make a proper arrangement to overcome the worst situation of breast cancer in Pakistan. For this, it is crucial to note the frequency, change gathering survival and death rate, therapy situations and widespread of disease. First, it is important to understand the common situations. In Pakistan, the second logic that force to death is breast cancer. We carried out this research at Services Hospital, Lahore from (January 2017 to November 2017) on several women who were affirmed to have cancer of breast toward the end of revolution. They are making the therapy of disease more difficult and thus damaging themselves along with their family. Commonly, cancer is a silent official killer. If it is established, it is extremely dangerous. If it is identified earlier, it can be cured. But in later metastatic stages, it is hard to treat and most often does not cure. Self-confidence of patient is increased, if in any case, treatment is done for most part. Females are affected physically and mentally by cancer of breast. The reason of fear to female is illness, its therapy, repeat danger and death. There is a misconception of breast cancer in Pakistan. It is like the second death demise apparently, when sorting about the illness, it cause great lepromin in female. In addition, there is a misunderstanding that cancer is a infection and its awareness of sickness alter with other social people. Furthermore, its spread poison among community. The patient become pen mist due to falling of hair and loss of breast. It will unsuitable effect the behavior of female and interfere with social activities of female. Moreover, the women feel the need of disconnection that has positive results for females. If in any condition, the disunion is based on long-term it will bring anxiety and dejection. To overwhelm the sentiment of eager, insecure none, surrender, anxiety and trauma, female employ extremely mastering and common method are more time.*

**Keywords:** Cancer, Decease, Pakistan, Awareness, Rural, Urban.**Corresponding author:****Dr. Muhammad Nouman Khan,**  
Div. HQ's Teaching Hospital,  
Mirpur AJK

QR code



Please cite this article in press Muhammad Nouman Khan *et al.*, **Importance of Awareness and Knowledge about Breast Cancer and Disease Prevention among Pakistani Women.**, *Indo Am. J. P. Sci.*, 2018; 05(10).

**INTRODUCTION:**

All over the world, one of the important cause of death is breast cancer. Among all the cancers surveyed all over the world, the percentage of breast cancer is 10%. It is the most broadly identified cancer in women showing 22% of women in 2000 [1]. The extent of unprotected qualities is BRCA1 and BRCA2. These have been noticed to be distinguishable and tried for variations in BRCA1 and BRCA2 to be an important apparatus for predicting breast cancer. In patients, the most necessary things associated with breast cancer are smoking, reduction in eating administration, equality and wholesome lacks in breast [4]. This disease can be kept by a short breast test along with these lines. This can protect the female from this shocking disgusting bad dream. The real cause of death in Pakistan is the breast cancer and it is shown by the above conviction undoubtedly. The wild perception should be given to Pakistan by the legislature in this

1-In Pakistan, the hazardous prevalence of breast cancer.

2-Breast cancer is not lethal and able to treat.

3-If this disease is examined on routine, it can be diagnosed earlier.

4-The life is supportable and after the cancer is similar to before cancer.

In the developing countries like Pakistan where the properties related to money are less, this can remarkably stifle the weight of the infection of breast cancer. The breast cancer in females is a notable health stress. This is the most obvious cause of cancer death among females. This is prevailing in both high resistance taking and low resistance taking countries. There is a shifting of occurrence, death and survival rates around the world from 4 times to 10 times. In the developing countries, the extent of breast cancer has increased swiftly in various residents as per the late calculations of world cancer. In Pakistan, there is high presence of breast cancer. Under the fact that there is a lack of record with appropriate data about understanding of cancer, sex, marital status, multiple sorts of disorder, diagnosis and treatment status and survival and death rate, to find the accurate condition of Pakistan is difficult. This is the one incentive because of which strategy makers cannot concentrate on this fast-growing problem. Because of unfavorable general condition, it is something but hard to predict that prevalence of breast cancer is increasing swiftly in any case. With the help of inspection, mainly due to establishment in time, there is illumination of late deaths from breast cancer in western countries. In most progressing

countries along with the patients in Pakistan, advanced treatment is down the way. This treatment has no virtually significance from a variety of medicines. By using the mass screening by both the mammographies, which include clinical breast examinations (CBE) and self-breast examination (SBE), early findings can be refined remarkably. Breast inspection is crucial likewise and is useful for arriving home with mass understanding, mainly confined guide, regardless of reality it is announced all over that simple and the best resolution for screening is mammography.

Literature Review: Cancer is totally dreadful and there are people who believe cancer a demise. Anyway, is it correct? What come off to one's figure? Why is it difficult to examine and cure this disorder? Above hundred illnesses the word cancer covers that present single standard. Perceptible the cells cover wild and sound tissue are destroyed by these cells. Despite of the fact that new medicines are being progressed consistently, it is condemnatory to perceive that about 9 million people are living today with the disease of cancer. Along with these words, you will be afraid to think that cancer disease in your friends and near ones can be reduced with self-confidence. The types of cancer that may affect the figure are above 100. Most cancerous tumors are able to cure and treatments of all disorders are increasing consistently. The type of cancer which is broadly known so far in females is breast cancer. Although men can also have this disease but mostly females are affected by this disorder. The left of this stuff whatever it is refers to the breast cancer of female as it were. Frequently body cells do not segregate at a constant rate even quickly. New cells are shaped instead of old cells or injured cells. Protuberances may be isolated some of the time. It happens when some cells segregate and multiply swiftly. In mammograms, approximately 80% of the findings are not related to cancer. Normally, these are liberal cancer or they may be some sort of non- devastation. When cancer strikes and hurts the neighboring tissues and organs then it is distinguished by chance. It is known as a danger at that step. Breast cancer normally observed first in lymph hubs near the axilla as it extends. These hubs are a part of lymphatic structure similar as the structure of blood flow. These hubs deliver liquid all over the framework. Cancer cells can be taken to several parts of body by means of natural liquids also called lymph liquids. It initiates another cancer. To assure this, there are three ways. First is to take self-test of breast. If the female knows the right method, they can inspect themselves

at home. Second way is to prepare the people for examination. To screen the mammograms is the third path. Prior to clinical justification, less than 2 years, mammograms cannot be removed. Calculation on yearly basis is disinclination. Breast disease cannot be frustrated by this. Unlikely if I withdraw it in advance, it can be treated.

### **Prevalence and incidence**

The disease is a pan communal issue. About 2/3 of the total population is affected by the disease. Of all the diseases, the most broadly studied cancer known so far is breast cancer. Breast cancer is examined in females in both the developed and developing nations. All over the world, the second logic that pushes towards death is breast cancer. Worldwide, breast cancer is present in one among 8 females. In developed and developing countries, the burden of this disease is increasing. We cannot control this disease until its treatment is taken. In 2002, 1.5 million new breast cancer were inspected recently. From these, about 411,000 are subjected to death. It is estimated under the light of recent calculation of the yearly normal developmental rate of frequency that in 2002, the happening will have stepped to 1.4-1.5 million of every 2010. This increment is with the range of 0.5% to 3%.

### **Cancer in Pakistan**

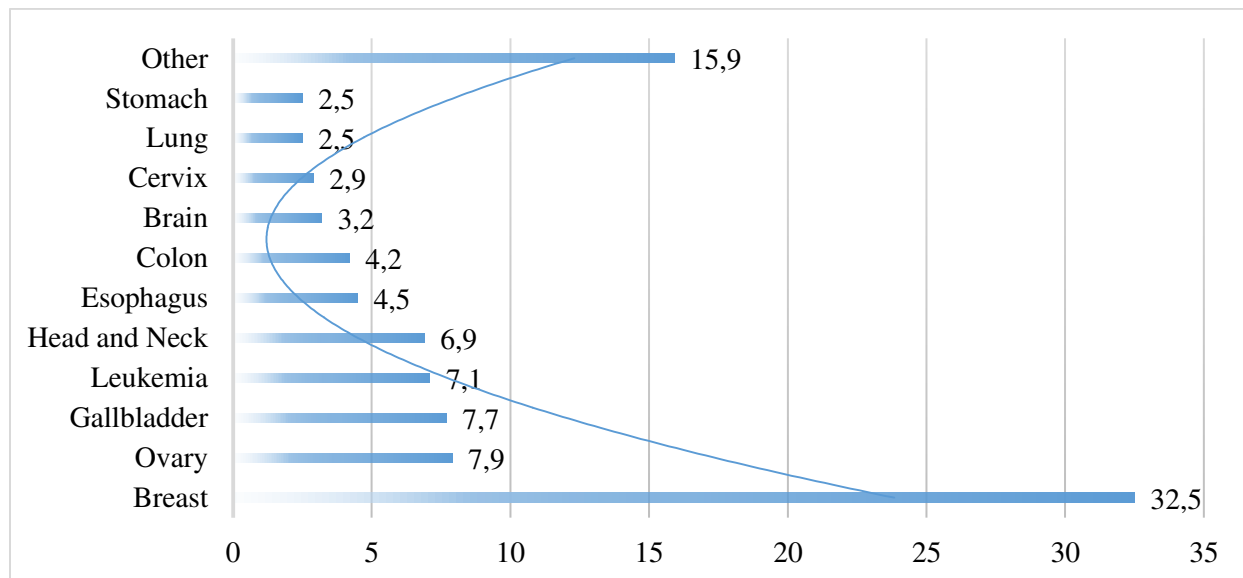
Cancer is an eradicated lineage and cancer of breast is a unique disease. Small lactating organs known as lobules and conduits bordering the lobules to the nipples makes the tissues of breast. Lymphatic vessels, connective tissue and fat tissue make the rest of the breast. On earth, the cancer which is mostly known so far is breast cancer. All over the world, the breast cancer is incredible danger for the health of females. Compatible, the females that are committed to breast cancer are about one million. Among females, the most broadly found cancer is cancer of breast. As reported by WHO 2008 GLOBOCAN, more than 1.38 million females are estimated to be affected by breast cancer. Everyone mature people, poor people, rich children and females are experiencing the disease. For Pakistan's family this disease is creating financial and social problems on serious basis. Pakistan is on the way to progress. Most of the people are inhabitants of sophisticated areas. There is no common foundation for health in

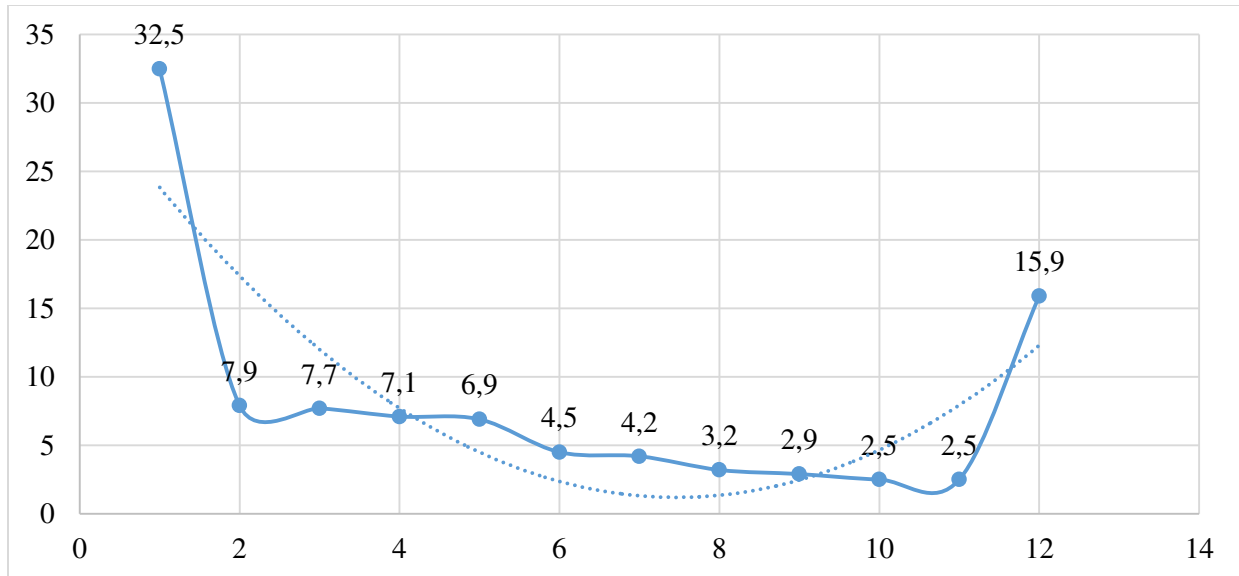
provincial areas of Pakistan and for inhabitants of Pakistan. Since, females are unknown of self-cleanliness situations and illiteracy among females is also contributing to breast cancer in females. Due to disunion of gender, most distinct females do not have authorized approach to medicinal offices in Pakistan. Most part of inhabitants are dependent on females. In Pakistan, among females, sexually transmitted affliction are very common diseases. The health of females is disgusting in the provincial areas of Pakistan due to budgetary problems. One out of nine females in Pakistan became a patient of breast cancer at a certain period of life.

The extent of breast cancer is astonishing in Pakistan, Asia. Similarly, young females are also living in the stage that drive them to breast cancer and with estimated harmful effects. Provincial females create cancer of breast every year. It is due to the reason that backward females have innate illness that is transferred from mother to small girls. Cervical disease, ovarian cancer and uterine cancer is a challenge for females living in backward and remote areas of Pakistan. For determination of various types of cancer, a screening focus is not available in Pakistan. Due to cancer of breast and hepatitis, many females are subjected to death every year. For distinguishing this disease, mammogram which is a screening program is helpful to much extent. A number of inhabitants cannot buy this screening program, since it is extraordinary expensive. Self-evaluation of breast is the most simple method, one have to do judgment one time a month. Specialists and medical employs will guide the female the way to do their breast self-assessment renovation one time in a month. There specialists and medical attendants are prepared at Health Centre. In Pakistan, the majority of females lives in a poor condition and due to this can't tolerate the expensive price of sneering fests Breast can be identified as a starting time by female and corresponding they can use this innovation without any doubt. Pakistan's classifications are illustrated by type of cancer in world in the above table. The type of cancer that extends swiftly is indicates by the position in the red color. The type of cancer that is total almost is indicated by the purple color. In addition, there is a fast extension of oral cancer in Pakistan according to the above perception [10].

**Table – I:** Relative frequency of different cancers in Pakistani females.

Malignancy Type	Percentage in the Women of Pakistan
Breast	32.5
Ovary	7.9
Gallbladder	7.7
Leukaemia	7.1
Head and Neck	6.9
Oesophagus	4.5
Colon	4.2
Brain	3.2
Cervix	2.9
Lung	2.5
Stomach	2.5
Other	15.9





### SINGS AND SYMPTOMS

Formation of another bunch is the most broadly identified reaction of the breast cancer. Breast cancer is fragile or even modified and even hand still a painless, difficult and random bunch of cancer will phonily be dangerous. Other indications of breast cancer which is imaginable are:

- Inflammation of all the breast parts (even there is no specific man is felt)
- Annoying of skin or furrowing.
- Pain in breast or nipple.
- The inward turning of the nipple (retraction)
- Breast skin's or nipple thickening, scan lines, and redness.
- The release of liquid other than breast milk from the nipple.

Cancer of breast extends to the lymph hubs, around the lymph hubs or neckline undersides of arms even prior to the assessment of breast disease's specific cancer. It can result in inflammation or lumps. Sometimes besides the breast disease's specific cancer, the result of the reaction is another thing, the expert should answer to the expert should answer to the expert and find out the cause.

### ANATOMY OF THE NORMAL BREAST

Each breast consists of 6-9 segments. These are known as lobes. These lobes coincide each other. Various small lobules (drain developing organ), are present in inner sides of each leaf. These lobules finish with many bulbs. Bulbs carry drain. The anatomical framework of the typical breast includes

Lobes, lobules and bulbs. These tubes are known as conduits (small tubes paring milk from lobules to nipples) connect these structure. Nipple is passed by their channels in the focal point of the dim range of skin known as a nipple. The area around the lobules and pipes is filled by fat. In the breast, there are no muscles still under each breast and around the ribs, muscles are present. Similarly, veins and veins passing dreamy liquid known as lymph is present in the breast. A small framework like beans which is called lymph hubs is present adjacent to lymph chained. Lymph hubs which are connected by lymph vessels are small bean- made the gathering of tough structure (cells crucial in tight against disease). In the axillar, on the bones of neck timing, and in the chest, humps of lymph hubs are present. In addition, lymph hubs are present in many other body parts.

### TREATMENT

The specialists will have to examine your best check-up timing of checking and possible indicators if the assessment of breast disease is effected once. However, by variables, there is an additional effect on calculation and treatment option. The example includes the common situation of health and a person's commitment.

Some or all the related medication may include in the treatment of breast cancer:

- Surgery
- Radiotherapy
- Chemotherapy
- Anti-hormones therapy
- Targeted therapy

**CONCLUSION:**

Ladies are physically affected by breast disorder. These diseases also crush them mentally. Each and every section of female's life is affected by this disease. Even females are surrounded by the anxiety and depression. All emotions the disease, its therapy, illness, repeat and fear of presence of disease lose expectation. The common ambiguity about the therapy designs dominates if identified. The sufficient knowledge about the disorder of the complete community is not shown by it. Moreover, for other people, illness as altering the significance of disease is wrong conclusion. Due to encouraged alopecia and mastectomy, therapy effects the images of female's figure. In social connection, alopecia starts marking. In this manner, its compel social exercises and spread disappointment among females. They take it as affliction and lose confidence and hence recovery is delayed. The tendency that confidence and assurance is low and even in pessimistic self-evaluation, the social exercises are forced is due to Mastectomy. The variations made by females are affected at the same time. It also affects the modifying behavior of these females. Moreover, females are made aware of their image due to mastectomy. It also inter-relate their thinking towards negativity. Therefore, there is limitation of social exercises and there arises a need to disintegrate. At the same time, friendlessness and dependence increase due to uncoupling. Anxiety, affliction and discouragement are created as a result of disassociation now and again. So, we need to avail the time important situations. There is a need to take the best method to overcome the disease an earth. Inadequate knowledge among society is a result of incorrect widespread of explanation of breast cancer patients, people abandon breast cancer as a risky ailment. The patients of breast cancers have opposite influence because of these tighten and as a result, it causes hiding of breast cancer patients. Indifference is also happened due to this factor.

**REFERENCES:**

1. Sohail S, Alam SN. (2007). Breast cancer in Pakistan: awareness and early detection. *J Coll Phys Surg Pak*, 17: 711 – 712. [PubMed].
2. Badar F1, Moid I, Waheed F, Zaidi A, Naqvi B. (2005). Variables associated with recurrence in breast cancer patients-the Shaukat Khanum Memorial experience. *Asian Pac. J Cancer, Prev*. 6: 54 – 57. [PubMed].
3. WHO, (2010). Health Profile of Pakistan. [http://www.worldlifeexpectancy.com/coun try-](http://www.worldlifeexpectancy.com/coun try-health-profile/Pakistan)

- health-profile/Pakistan.
4. Malik, Imtiaz A., Khan, Wajahat A. 1998. Pattern of Malignant Tumors Observed in a University Hospital: A Retrospective Analysis. Department of Medicine, Aga Khan University Hospital and Department of Oncology, National Cancer Institute, Karachi. Pakistan. pp. 120-122.
5. World Health Organization. (Online) 2009 (Cited 2009 April 26). Available from URL: <http://www.emro.who.int/dsaf/dsa696>.
6. The Daily Times. (Online) 2009 (Cited 2009 April 26). Available from URL: [http://www.dailytimes.com.pk/default.asp? Page = 2009 42 story\\_2-4-2009\\_pg13\\_11](http://www.dailytimes.com.pk/default.asp? Page = 2009 42 story_2-4-2009_pg13_11).
7. Armstrong K, ELisen A, Weber B. Assessing the risk of Breast Cancer. *N Engl J Med* 2000; 342: 564-71.
8. Faheem M, Khurram M, Jafri IA, Mehmood H, Hasan Z, Iqbal GS, et al. Risk factors for breast cancer in patients treated at NORI Hospital, Islamabad. *J Pak Med Assoc* 2007; 57: 242-4.
9. Hunter CP. (2000). Epidemiology, stage at diagnosis, and tumor biology of breast carcinoma in multiracial and multiethnic populations. *Cancer*, 88: 1193–202. [PubMed]
10. Werlay J, Shin HR, Bray F, Forman D, Mathers CD, Parkin D. (2010). GLOBOCAN 2008, Cancer incidence and mortality worldwide. IARC Cancer Base No. 10, International Agency for Research on Cancer, Lyon.